

# SpectraShop™ 6

It takes software to turn measurements into meaningful information. SpectraShop is a powerful software tool set for capturing, analyzing and organizing color spectra. It's tools have been created to meet the needs of anyone working in color, with functions designed for a wide variety of applications.

SpectraShop has been used for

- fluorescence analysis,
- determining aim values for color targets,
- creating paint matches,
- metamerism studies,
- analyzing digital camera performance,
- calculating filtration for color balanced lighting
- investigating flower pollen targets,
- analyzing goniometric data
- ancient document analysis
- checking monitor calibrations
- and much more...

The applications for this program are limited only by your imagination.

SpectraShop's measurements are stored in collections and each collection can contain thousands of spectra, with no limit on the number of collections, enough storage for almost any application. Multiple collections may be simultaneously open, enabling complex spectral analyses.

## Instant Difference

A feature unique to SpectraShop is Instant Difference. Select two specimens and the colorimetry values automatically change to colorimetric differences. This makes it very easy to get quick comparisons. More extensive differences may be analyzed with the more powerful Difference Tool.

## Instant Average

Select any three or more specimens and Instant Average the average colorimetric values are calculated. This feature saves time, making it easy to average a series of measurements.

## Supported Instruments

### Instrument Direct Import

Gretag Spectrolino	•
Gretag ColorEye XTH	•
Konica-Minolta FD-7	•
Konica-Minolta MYIRO-1	•
Photo Research PR-xxx	•
Sekonic C-7000	•
StellarNet	•
Variable Spectro 1	•
Variable Spectro 1 Pro	•
X-Rite ColorMunki	•
X-Rite eXact	•
X-Rite i1Pro 1	•
X-Rite i1Pro 2	•
X-Rite i1Pro 3	•
X-Rite i1Pro 3 Plus	•

## Export Data Formats

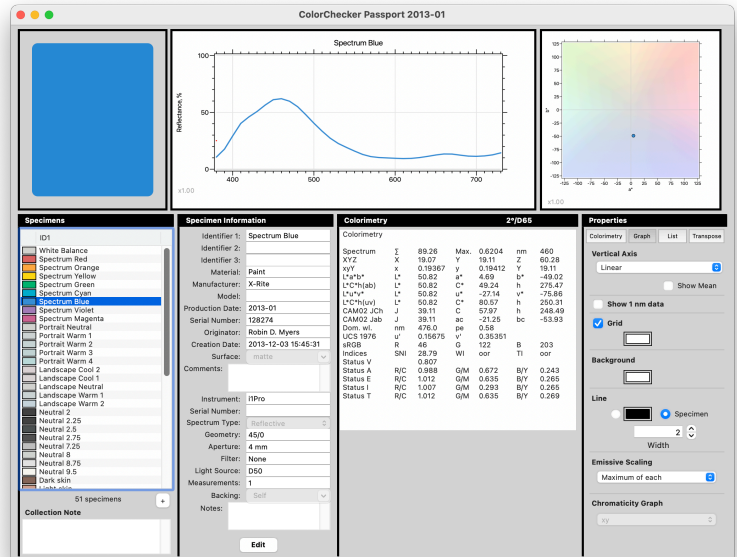
SpectraShop supplies a variety of export formats

CGATS 17  
X-Rite CGATS  
MeasureTool  
Spreadsheet  
raw data

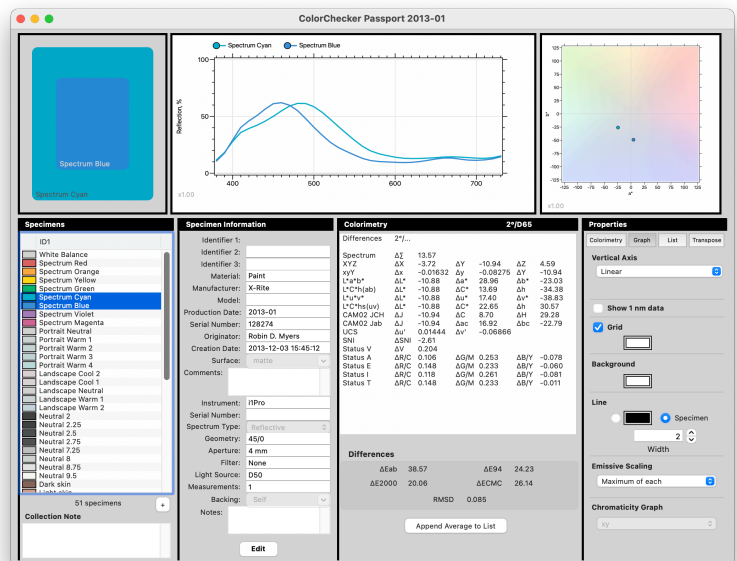
SpectraShop format (an extension of CGATS 17 to include light measurements), the data created by SpectraShop is easily accessible.

Most of these formats allow you to select which colorimetric values to export, in addition to the spectral data.

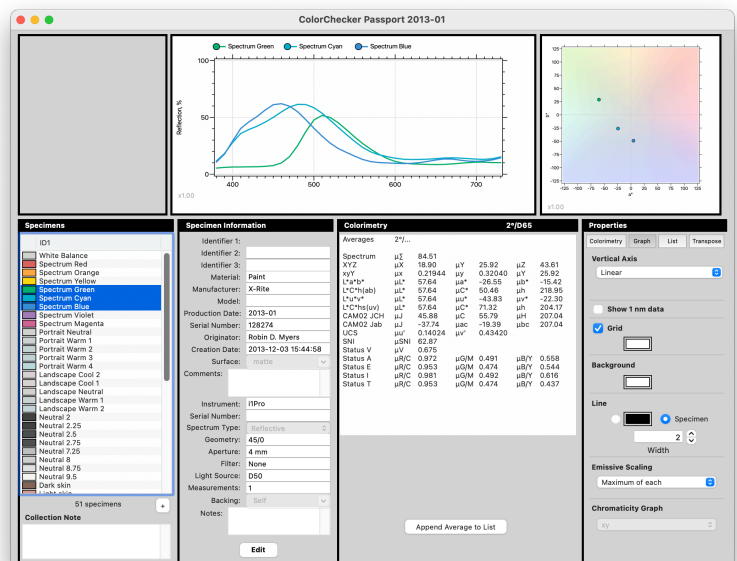
## Standard Colorimetry



## Instant Difference

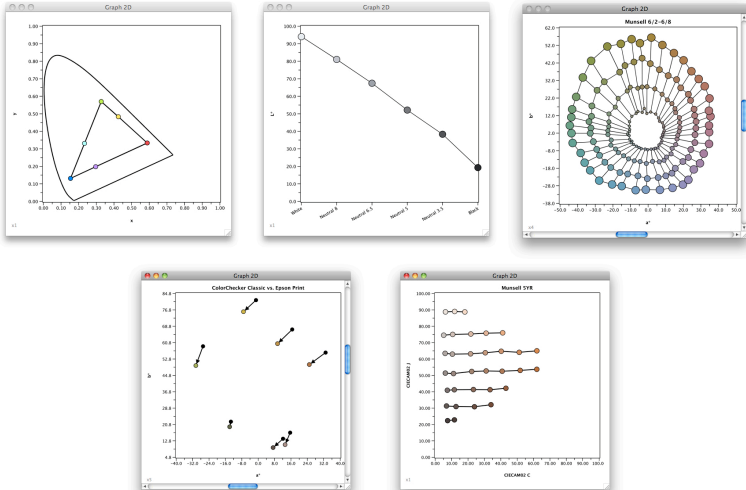


## Instant Average



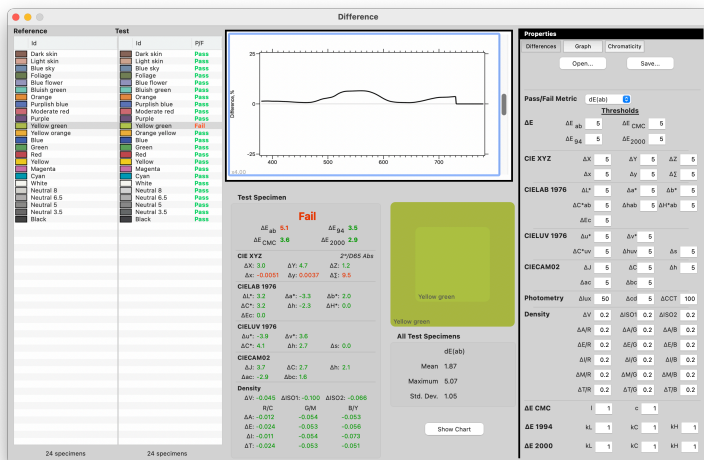
## Graph

SpectraShop offers the most flexible graphing capabilities available of any spectral analysis program. Axes can be defined in any of over 30 colorimetric and density values, opening new ways to visualize your data. Groups of specimens can be compared graphically with each other and connected with lines or arrows to show change trends. Graphs can be exported for creating reports and documents with page layout and word processing programs.

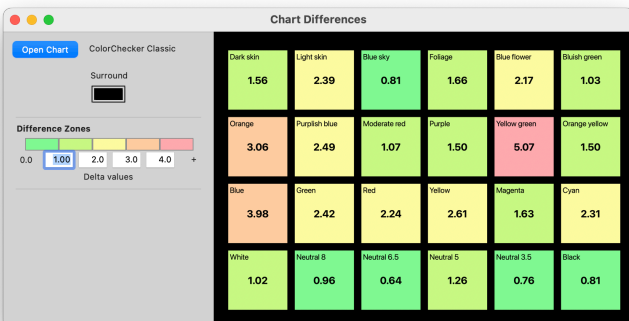


## Difference

Comparison against a single reference or paired comparisons are possible. Over 40 differences are calculated, including entire list statistics.



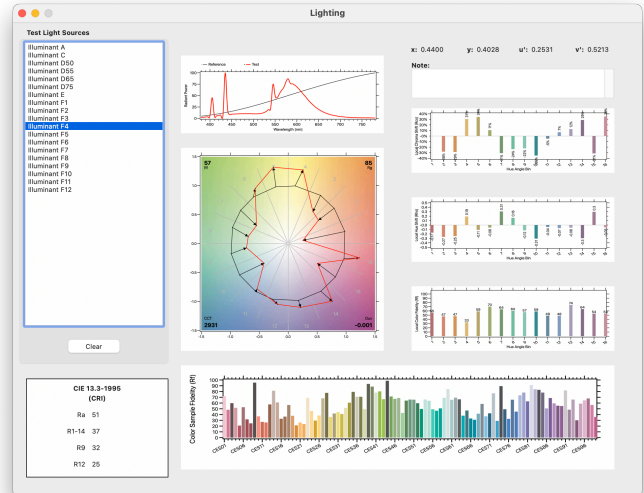
## Chart Difference Chart



## Lighting Tool

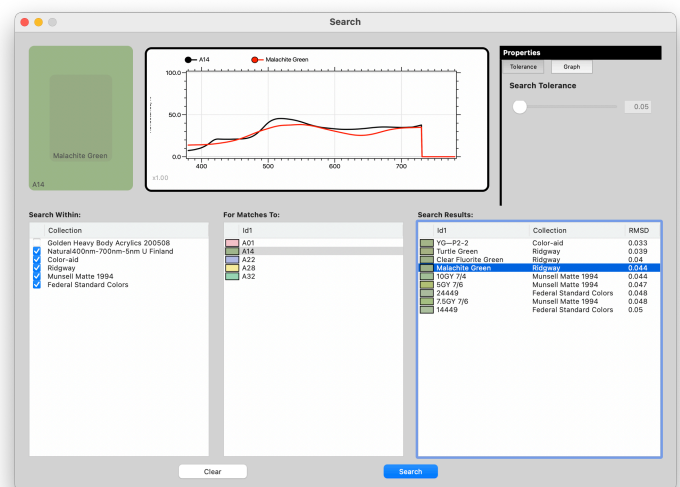
The color rendering properties of lighting can be analyzed according to the TM-30-18 standard.

- Replaces 14 limiting CRI patches with 99 more extensive TM-30 patches.
- Chroma shift, hue shift, color fidelity analyses.
- CRI values shown for backward compatibility.
- Export the full TM-30 report to a PDF file.



## Search Tool

All currently open collections may be searched for spectral matches to a list of spectra. This produces matches which are more lighting independent than colorimetric matches.



## Pricing and Availability

SpectraShop is available for Macintosh and Windows at the insanely low price of \$99 USD from <http://store.rmimaging.com>

## Try before purchasing

Enter the following registration information for a free four week trial.

User: Test Drive

Code: 06182-30049-03502-04047-65631-80519-20625-40048



**Robin Myers  
Imaging**

## Contact:

925-519-4122

[robin@rmimaging.com](mailto:robin@rmimaging.com)

[www.rmimaging.com](http://www.rmimaging.com)